

**Learning Activity**  
**3.4 – Operation BLUE STEEL**

---

**RESOURCES**

Syndicate Room  
Laptop with projector  
Whiteboard  
Maps of CARANA  
CARANA reference material

**TIME**

Suggested time 550 minutes:  
500 minutes - discussion and preparation in syndicate  
50 minutes - presentation in plenary

**PREPARATION**

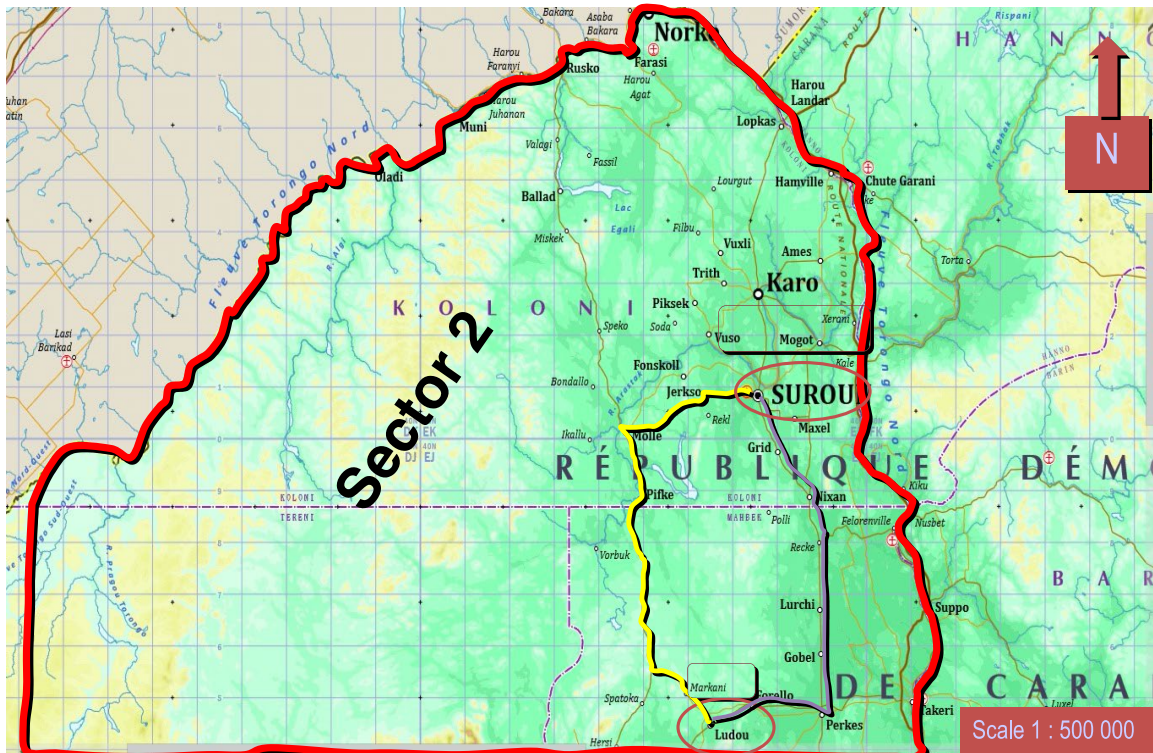
Syndicates will be divided into two planning groups, so only 2 x syndicate rooms are required (if there are 3 or 4 syndicates they will be regrouped into 2 groups). Participants will assemble in their assigned syndicate rooms and prepare a presentation based on the scenario and deliverables listed below. The presentation will be delivered in plenary after 500 minutes.

**NOTES TO INSTRUCTORS:**

The aim of this activity is to allow the two Planning Groups (A and B) to have considerable time to complete a deliberate planning activity. This activity will be referred to as Operation BLUE STEEL and will require the participants to utilise the knowledge and skills gained from previous lessons and learning activities. The Planning Groups must complete a time appreciation and build in appropriate time for detailed rehearsals. The instructors for Group A should take the final rehearsal for Group B and the instructors for Group B should take the final rehearsal from Group A.

## SCENARIO

# MAP ORIENTATION



- The Force Commander (FC) has been receiving a lot of reports of increased IED strikes along the Main Supply Route (MSR) within Sector 2 and wants to increase counter IED operations and security as this MSR is vital to on-going mission operations. The FC has advised his U5, to begin planning for a TOB. The U5 has asked you as the Force U4 to participate in the planning process to cover all aspects of logistical support.
- From your conversations with the U5 you understand the following:
  - A Company from Sector 2 (NAMBATT) has been tasked for this upcoming task
  - The task has been named Operation BLUE STEEL and will be conducted over 3 distinct phases: Deployment, Sustainment and Redeployment.
  - A temporary TOB will be established at location LUDOU for a period of 120 days
  - The TOB must be operational within 14 days (today is \_\_\_\_\_)
  - Security and counter IED operations will take place on the MSR between location FORELLO to BEKS with the assistance from the Mission Engineer unit located in Galasi

- The NAMBATT company will include 20 females
- There are not suitable logistics resources within Sector 2 for establishing the TOB, particularly regarding engineering assets and sustainment operations will prove problematic for medical aspects especially regarding CASEVAC due to helicopter and crew availability
- Upon the conclusion of Operation BLUE STEEL, 14 days have been allocated to close out the TOB and redeploy the troops and equipment

Today's date is \_\_\_\_\_ and the TOB needs to be operational No Later Than (NLT) 1600 Hours on \_\_\_\_\_. The TOB will need to support a Company (+) in terms of size and the security situation in this part of CARANA is considered high risk.

**Deliverables:**

1. Complete a Logistics Estimate to include:
  - Time appreciation
  - Principles of logistics
  - Key considerations for sustainment
  - Mission Analysis (logistics planning factors or 5D(R), deductions for all logistics functions (supply, medical, maintenance, transport and communications) and risk analysis
  - Dependency Support Matrix
2. What other organisations need to be contacted to assist in the planning?
3. Are there any specific planning concerns that you need to consider (ie. gender)?
4. Requests for Information (RFIs) greatly assist the planner to confirm or refute assumptions or deductions made. Prepare a list of logistics RFIs that you will wish to send and where.
5. Conduct a pre-reconnaissance.
6. Prepare a reconnaissance checklist to cover the following logistics functions: general, supply, transport, maintenance, engineers, medical and communications.
7. Produce a reconnaissance plan and timeline.

8. You will need to put deliverable 1 in the form of a 15-minute power point presentation that will be briefed to the COS in 500 minutes. All other deliverables will be discussed in Syndicate (deliverables 2-7). The presentation must cover all logistics support planning considerations for all 3 phases of Operation BLUE STEEL (Deployment, Sustainment and Redeployment).

## Learning Activity

### 3.4 – Operation BLUE STEEL

#### RESOURCES

Syndicate Room  
Laptop with projector  
Whiteboard  
Maps of CARANA  
CARANA reference material

#### TIME

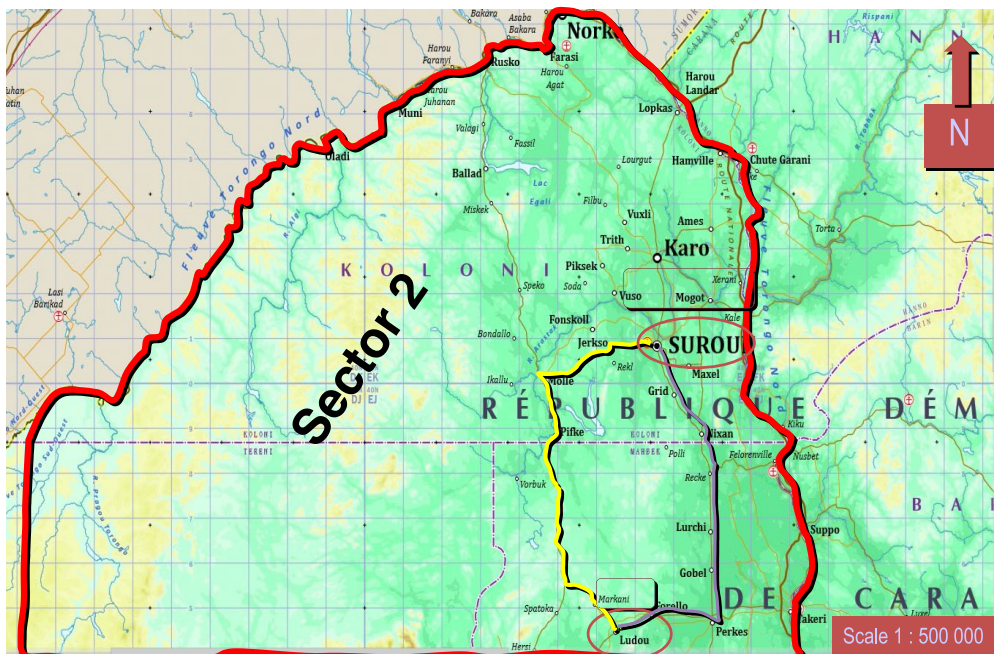
Suggested time 550 minutes:  
500 minutes - discussion and preparation in syndicate  
50 minutes - presentation in plenary

#### PREPARATION

Syndicates will be divided into two planning groups, so only 2 x syndicate rooms are required (if there are 3 or 4 syndicates they will be regrouped into 2 groups). Participants will assemble in their assigned syndicate rooms and prepare a presentation based on the scenario and deliverables listed below. The presentation will be delivered in plenary after 500 minutes.

#### SCENARIO

## MAP ORIENTATION



- The Force Commander (FC) has been receiving a lot of reports of increased IED strikes along the Main Supply Route (MSR) within Sector 2 and wants to increase counter IED operations and security as this MSR is vital to on-going mission operations. The FC has advised his U5, to begin planning for a TOB. The U5 has asked you as the Force U4 to participate in the planning process to cover all aspects of logistical support.
- From your conversations with the U5 you understand the following:
  - A Company from Sector 2 (NAMBATT) has been tasked for this upcoming task
  - The task has been named Operation BLUE STEEL and will be conducted over 3 distinct phases: Deployment, Sustainment and Redeployment.
  - A temporary TOB will be established at location LUDOU for a period of 120 days
  - The TOB must be operational within 14 days (today is \_\_\_\_\_)
  - Security and counter IED operations will take place on the MSR between location FORELLO to BEKS with the assistance from the Mission Engineer unit located in Galasi
  - The NAMBATT company will include 20 females
  - There are not suitable logistics resources within Sector 2 for establishing the TOB, particularly regarding engineering assets and sustainment operations will prove problematic for medical aspects especially regarding CASEVAC due to helicopter and crew availability
  - Upon the conclusion of Operation BLUE STEEL, 14 days have been allocated to close out the TOB and redeploy the troops and equipment

Today's date is \_\_\_\_\_ and the TOB needs to be operational No Later Than (NLT) 1600 Hours on \_\_\_\_\_. The TOB will need to support a Company (+) in terms of size and the security situation in this part of CARANA is considered high risk.

### **Deliverables:**

1. Complete a Logistics Estimate to include:
  - Time appreciation
  - Principles of logistics
  - Key considerations for sustainment

- Mission Analysis (logistics planning factors or 5D(R), deductions for all logistics functions (supply, medical, maintenance, transport and communications) and risk analysis
  - Dependency Support Matrix
2. What other organisations need to be contacted to assist in the planning?
  3. Are there any specific planning concerns that you need to consider (ie. gender)?
  4. Requests for Information (RFIs) greatly assist the planner to confirm or refute assumptions or deductions made. Prepare a list of logistics RFIs that you will wish to send and where.
  5. Conduct a pre-reconnaissance.
  6. Prepare a reconnaissance checklist to cover the following logistics functions: general, supply, transport, maintenance, engineers, medical and communications.
  7. Produce a reconnaissance plan and timeline.
  8. You will need to put deliverable 1 in the form of a 15-minute power point presentation that will be briefed to the COS in 500 minutes. All other deliverables will be discussed in Syndicate (deliverables 2-7). The presentation must cover all logistics support planning considerations for all 3 phases of Operation BLUE STEEL (Deployment, Sustainment and Redeployment).

# Op BLUE STEEL

## Aim

- Use mission support planning concepts to produce a Logisitics ESTIMATE

## Deliverable(s)

- Conduct a Log ESTIMATE for a FOB operating for 120 days (over 3 phases)
- Answer all deliverables
- Brief FC

## Time Allocation

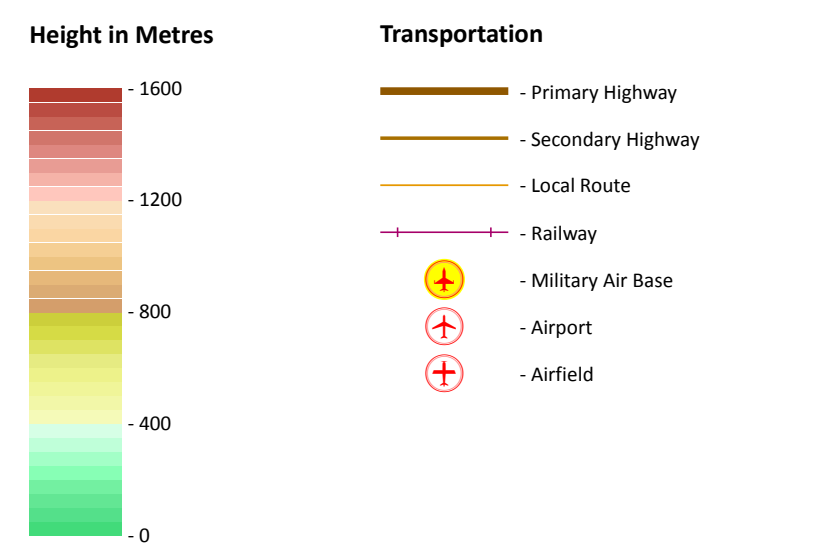
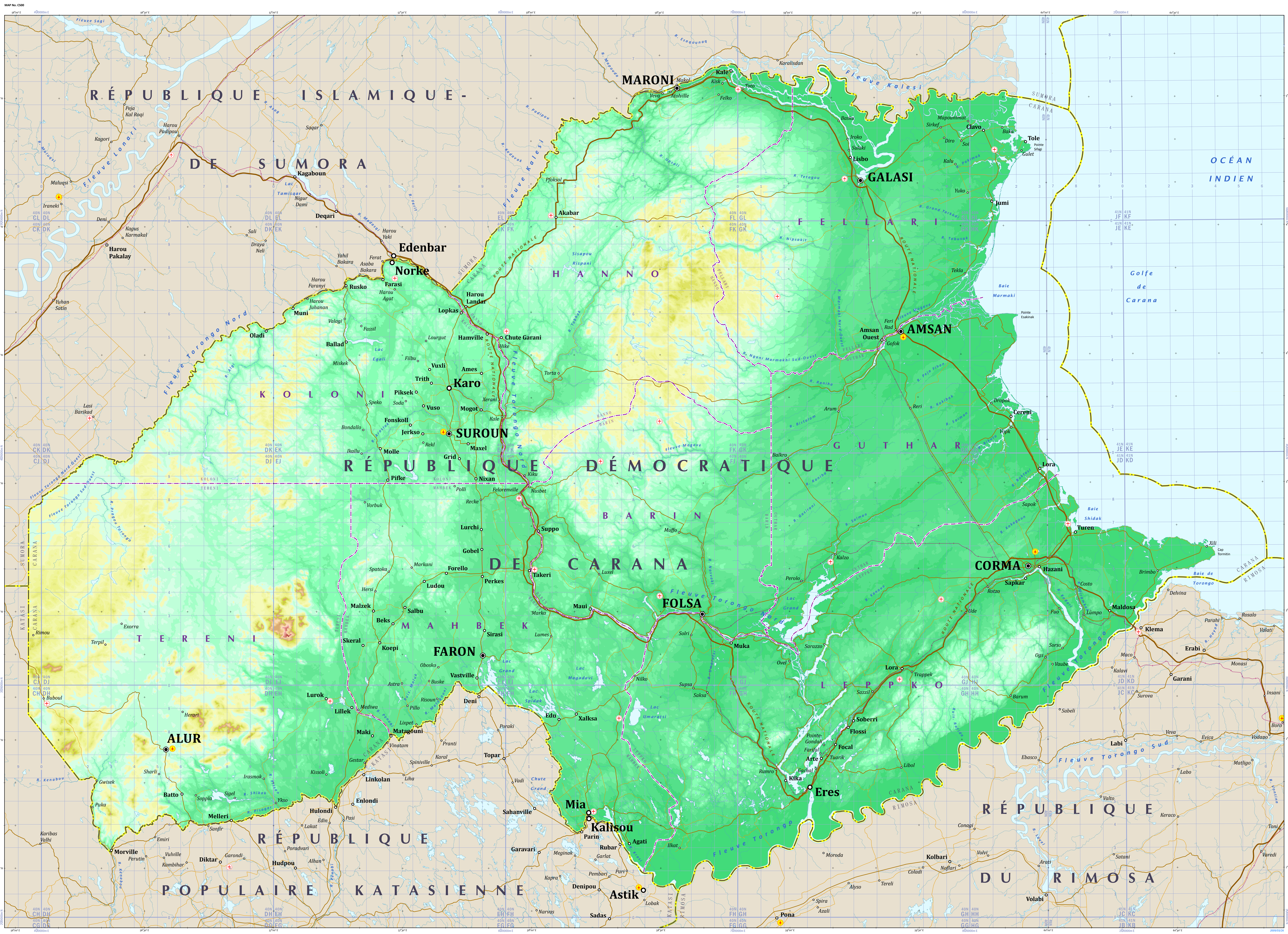
Discussion: (Group) 500 mins  
Presentation: (Plenary) 50 mins  
  
Total: 550 Mins

## Notes

Given:

- Activity 3.4 Handout
- CARANA Maps
- CARANA Reference Material





- Transportation**
- Primary Highway
  - Secondary Highway
  - Local Route
  - Railway
  - Military Air Base
  - Airport
  - Airfield

- Boundaries**
- International Boundary
  - Departmental Boundary

- Communities**
- Departmental Capital
  - City
  - Town
  - Village

MAP No. C500

1:500,000  
UTM Zone 40N (6, 41N)  
10,000m Grid

0 10 20 30 40 50 60 70 80 90 100 km  
0 10 20 30 40 50 60 miles

République démocratique de  
**Carana**

PEARSON  
PRESTIGE ET CIE  
Copyright © 2008 Pearson Publishing Canada  
All Rights Reserved.

NOT TO BE USED FOR NAVIGATIONAL PURPOSES