



# Lesson 1.3

## UNMO Concept of Support

# Lesson 1.3 Content

- Support Structure
- Support considerations and requirements
- CASEVAC
- Communications / Technology
- Security support

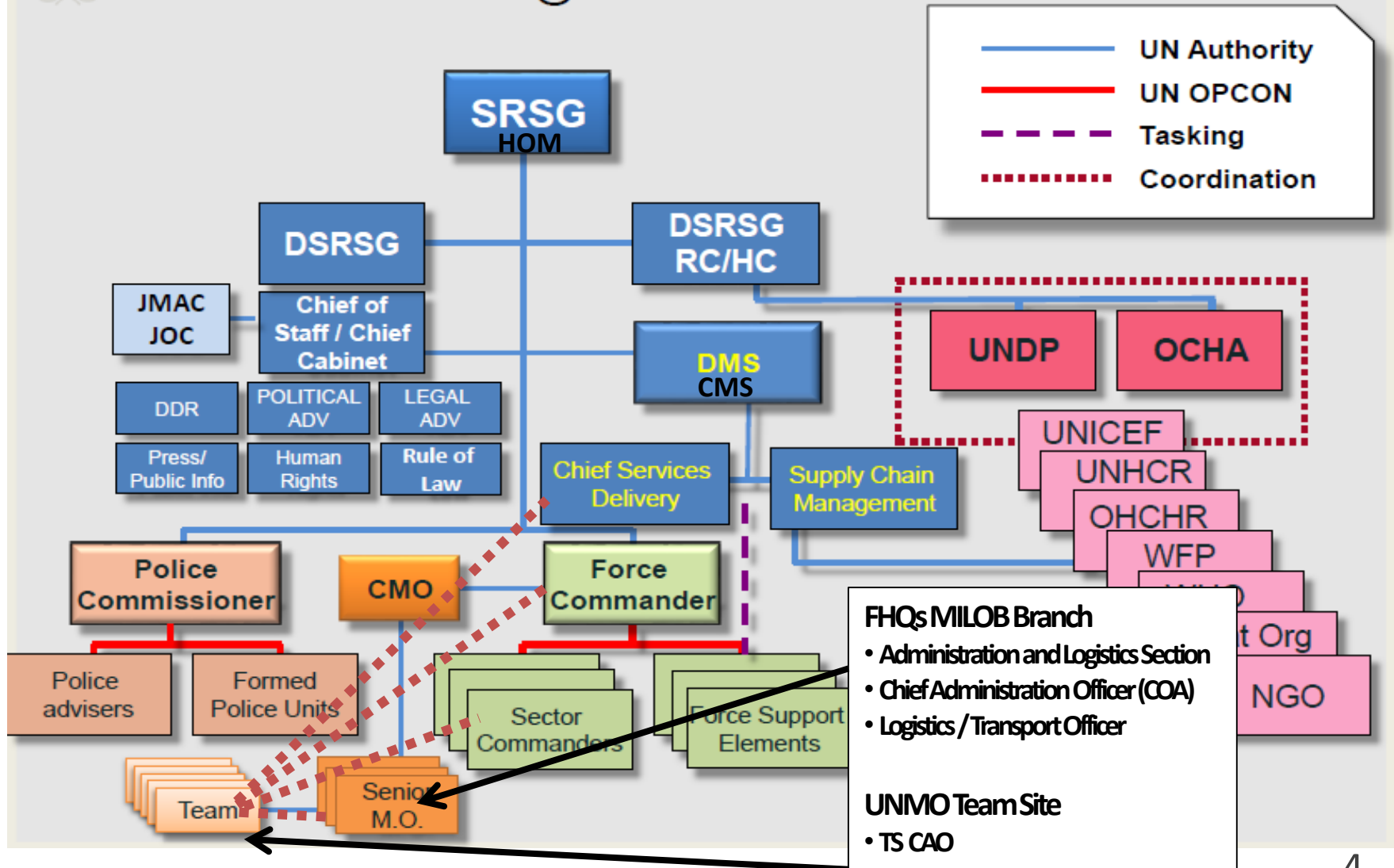
# Learning Outcomes Lesson 1.3

- Explain UNMO support structure
- Explain the UNMO concept of support and special requirements
- Explain planning considerations for CASEVAC
- Explain UNMO considerations for security support

# UNMO Support Structure



## Integrated Mission



# UNMO Support Considerations

- Mission Support Plan
- COA / Logistics and Transport Officer
- Account for personnel / equipment /supplies
- Forecast requirements
- Oversee equipment maintenance
- Ensure communications readiness and requirements

# Personal Equipment and Self Sustainment

- Personal Protective Equipment (PPE)
- Personal items
- Food and water
- Lodging
- Mission Subsistence Allowance (MSA)

# Common UNMO Support Requests Exercise

Learning Activity:

List five external support requirements  
UNMO may require

**Time Allocated:**

**Estimate 5 min group discussion ; 2 min back brief per group**

# Common Requests for Support

- Security / escorts
- Transportation / fuel
- Communications
- Maintenance
- Language Assistants
- Emergency services



# CASEVAC Support

- Casualty evacuation vs medical evacuation
- Standards
- CASEVAC 10/1/2 guidelines
- Methods
- Planning and coordination

# Coordination for Security

- Route Security
- Requests and coordination
  - Host Nation (HN) military / police
  - UN components (military / police / civilian)
  - Mission Partners
  - Local Authorities
  - Parties to the conflict
  - Force / Sector HQs

# Communications Support

- Equipment
- UN force / inter-sector communications
- Communications with HN Security Forces

# Lesson Take Away

- Mission Subsistence Allowance (MSA)
- Support predominantly coordinated with DMS / CMS structure through FHQs Mission HQs MILOB Cell / Sector HQ
- UNMO COA / Log and Admin Officers responsible for tracking, requesting and coordinating support
- Special considerations and planning required medical, security, and communications

# Questions