



# Lesson 3.6

## MILEOD Operational Support

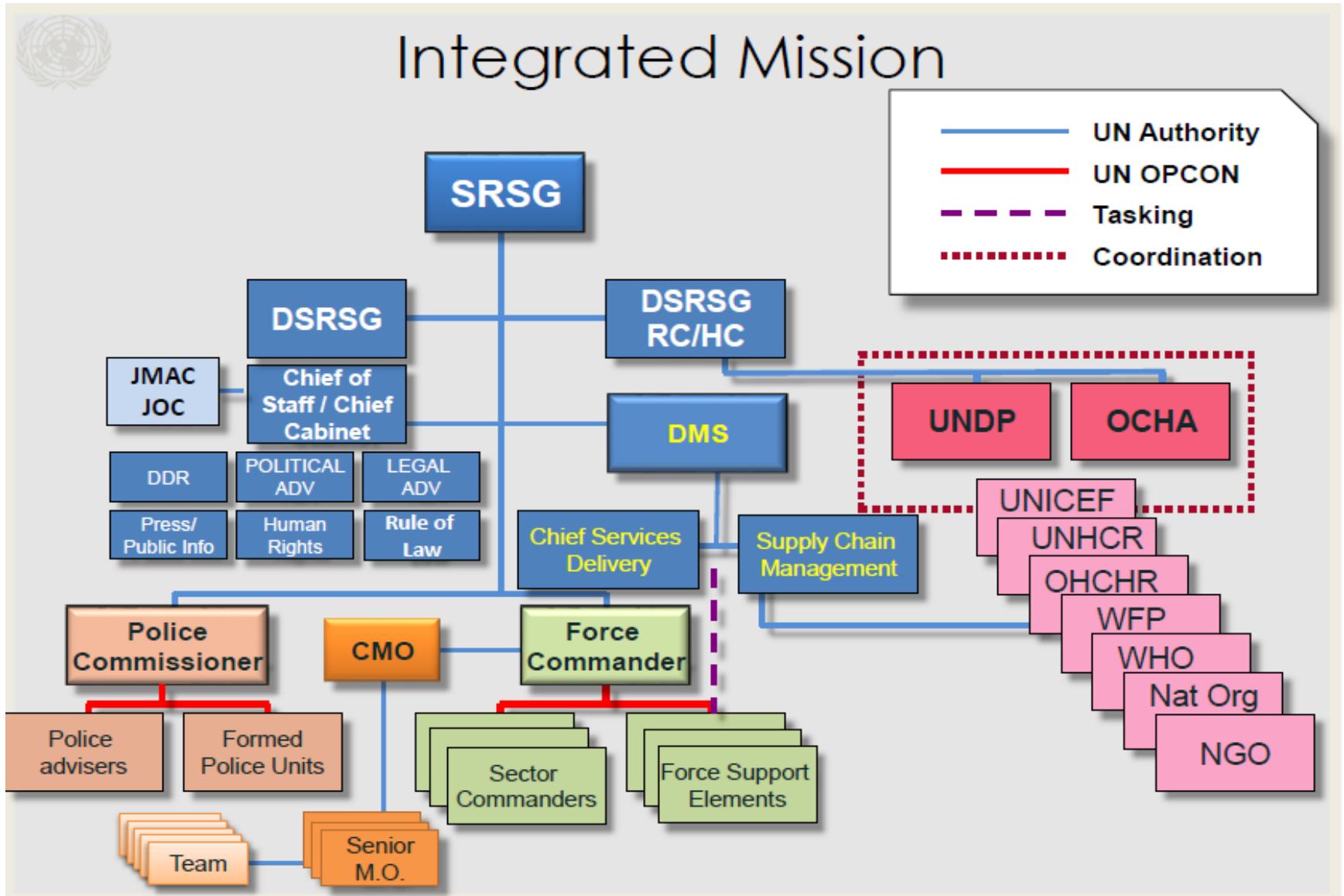
# Lesson 3.6 Content

- Introduction
- Staff organization
- Support considerations and coordination
- Summary

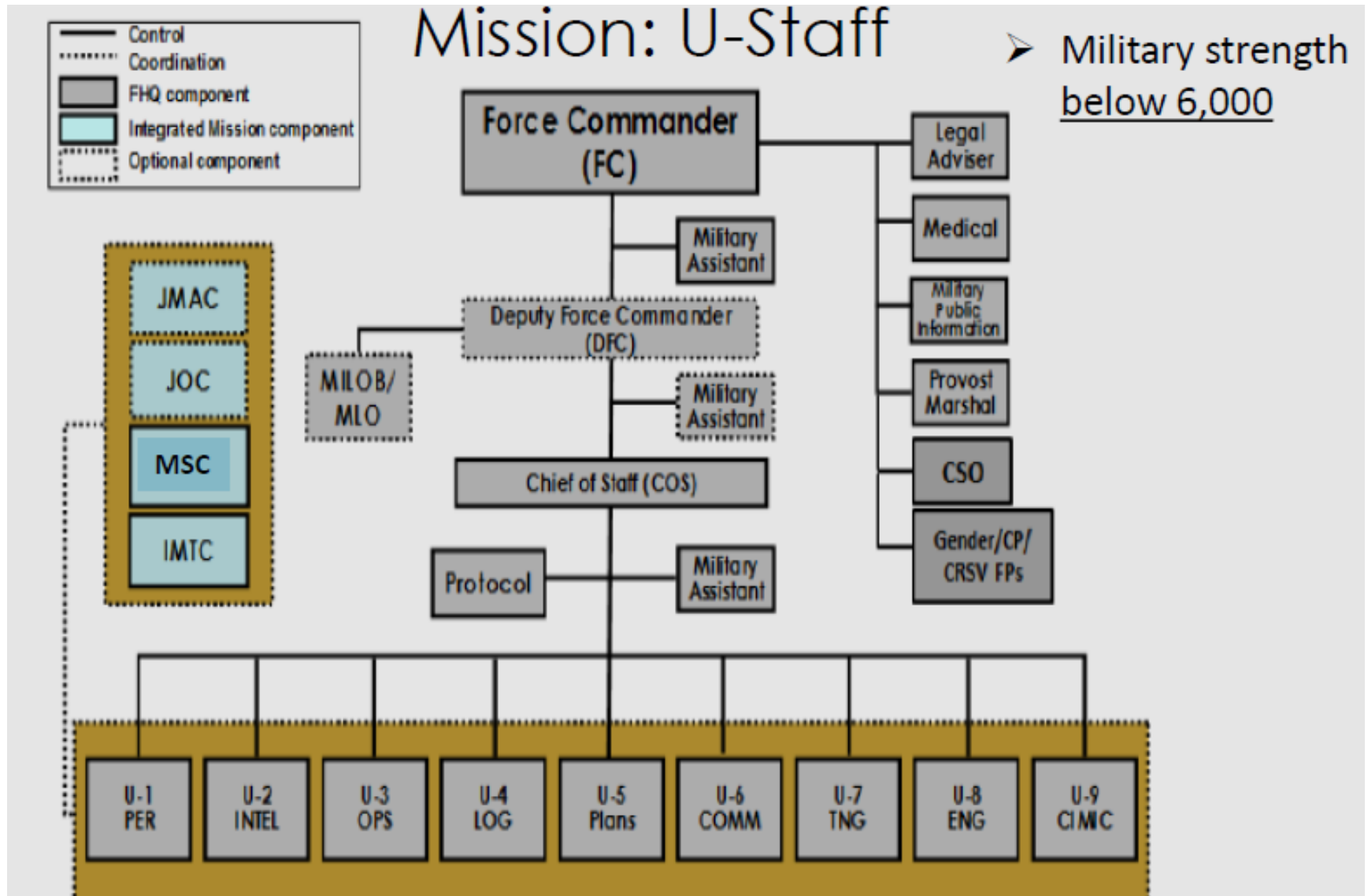
# Learning Outcomes Lesson 3.6

- Understand typical staff organization
- Explain Common Operational Support Requirements
- Explain the planning considerations for medical support
- List the planning considerations for security
- Explain the planning considerations for Engineering and transportation

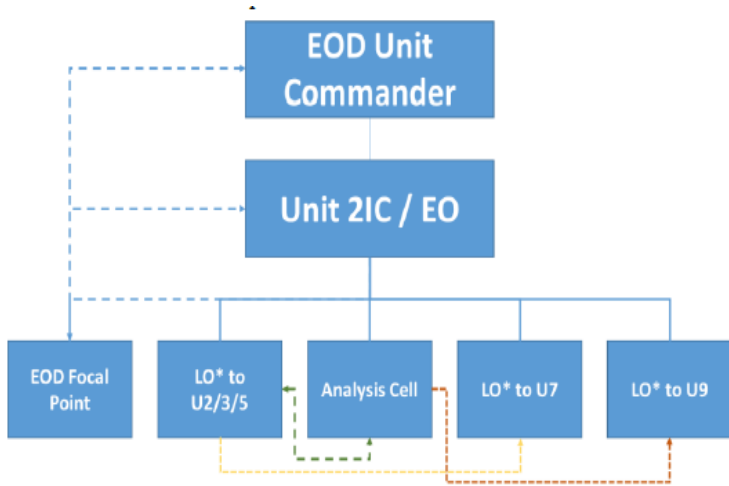
# Mission Structure



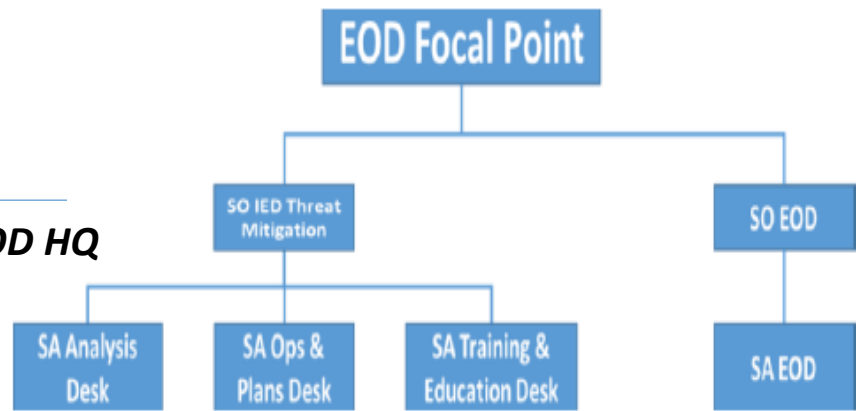
# Typical Organization of UN



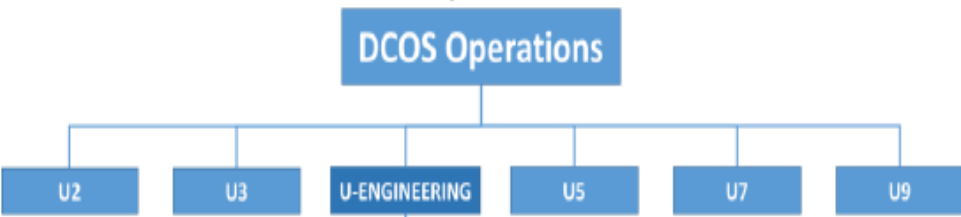
# EODCC Integration Options



**Figure 1-3 Model A Possible Relationship in EOD HQ**



**Figure 1-4 Model B of EOD Unit Integration into UN Headquarters**



**Figure 1-5 Model C of EOD Unit Integration into UN Headquarters**

Regardless of the of the organization the EOD Coordination Cell is critical.  
LNOs enhance efficiency and effectiveness

# Common Requests for Support

- Security Forces / Recce
- Search
- Transportation
- Use of Heavy Engineer Assets / MHE
- Communications
- CREW
- Language Assistants
- Liaison with Emergency Services

# CASEVAC Support

- Casualty Evacuation vs Medical Evacuation
- UN Standards for CASEVAC
- 10/1/2 Guidelines
- Methods

**Air CASEVAC planning ref: UNMUM AVN at <http://research.un.org/stm>**



# Coordination for Security

- Operational Cordon
  - Controlled by Security Force Commander
- EOD Cordon
  - Includes the Incident Control Point (ICP)
  - Determined and controlled by the EOD Team Leader
- Route Security
  - To and from EOD Scene-of-Action
- Coordination with Host Nation
  - Security Forces, local authorities
  - Infrastructure management
  - Supporting/Inter-Sector UN Forces

# Engineering Support

- Route Recce
- Route Clearance
- Vulnerable Point / Area threat mitigation
- General Engineering for Force Protection
- Heavy Engineer Equipment

Engineer planning refer to UN MUM EN at  
<http://research.un.org/stm>

# Communications Support

- Communications Equipment
  - UN Force / Inter-Sector Communications
  - Communications with HN Security Forces
- CREW (ECM)
  - Employment
  - Frequency spectrum management

# Take Away

- Understand the UN Mission organization
- Coordinate early
- LOs can be a key enabler
- Continuous process

# Questions

# Abbreviations

- **Casualty Evacuation (CASEVAC)**
- **Counter Radio-controlled Electronic Warfare (CREW)**
- **Director/Chief of Mission Support (DMS/CMS)**
- **Explosive Ordnance Disposal Coordination Center – (EODCC)**
- **Force Commander (FC)**
- **Head of Mission (HOM)**
- **Incident Control Point (ICP)**
- **Liaison Officer (LO)**
- **Material Handling Equipment (MHE)**
- **Medical Evacuation (MEDEVAC)**

# Abbreviations

- **Memorandum of Understanding (MOU)**
- **MILEOD – Military Explosive Ordnance Disposal**
- **National Support Element (NSE)**
- **Point of Contact (POC)**
- **Senior Representative of the Secretary General (SRSG)**
- **Standard Operating Procedure (SOP)**
- **Status of Forces Agreement (SOFA)**
- **Troop Contributing Country (TCC)**
- **UN-Owned Equipment (UNOE)**

# Abbreviations

- **U1 - Personnel Services**
- **U2 - Information**
- **U3 - Operations**
- **U4 - Logistics**
- **U5 - Plans**
- **U6 - Communications**
- **U7 - Training**
- **U8 - Engineering**
- **U9 - CIMIC**